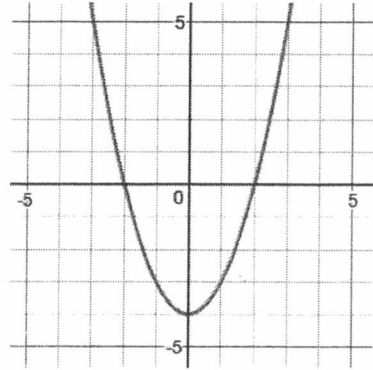


Directions: Evaluate each function for the given values of x . Then list all key features.

1. $f(x) = x^2 - 4$



$f(3) =$

$f(-2) =$

Domain:

Range:

Extrema:

Increasing:

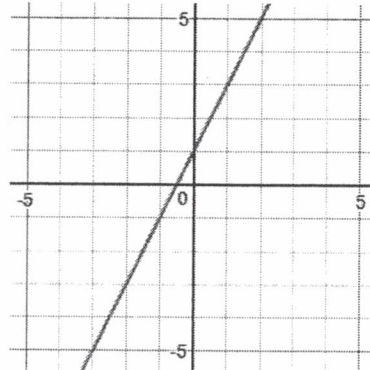
Decreasing:

x-intercept:

y-intercept:

End Behavior:

2. $f(x) = 2x + 1$



$f(6) =$

$f(-3) =$

Domain:

Range:

Extrema:

Increasing:

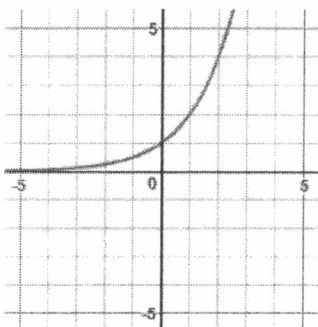
Decreasing:

x-intercept:

y-intercept:

End Behavior:

3. $g(x) = 2^x$



$g(1) =$

$g(-2) =$

Domain:

Range:

Extrema:

Increasing:

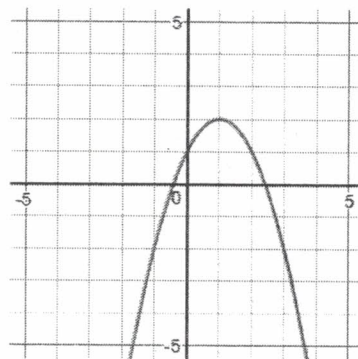
Decreasing:

x-intercept:

y-intercept:

End Behavior:

4. $h(x) = -(x - 1)^2 + 2$



$h(-2) =$

$h(3) =$

Domain:

Range:

Extrema:

Increasing:

Decreasing:

x-intercept:

y-intercept:

End Behavior: